

Border Youth Tennis Exchange  
Summer 2021 Seasonal Report

Trimestral Attendance Report



The following report was conducted with information from the BYTE 2021 summer term. The courses included began June 14<sup>th</sup> and ended September 10<sup>th</sup>. The general attendance of participants, their ages, and their genders are introduced in the beginning of this report. Then, the specific courses and their assistance per session are outlined. Notable observations and recommendations from instructors are also shared per course.

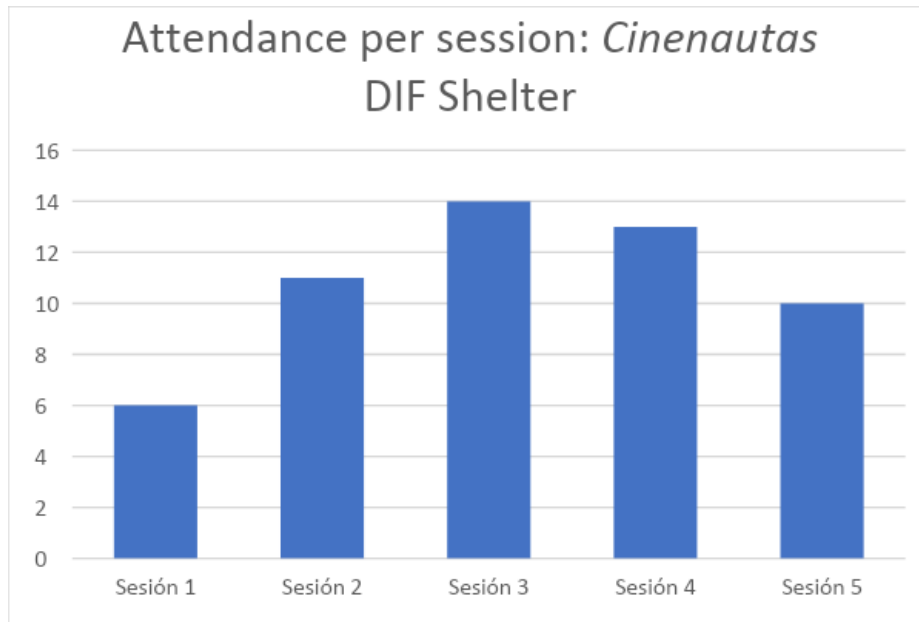
Summer 2021 general demographics

Data	Frequency	Percentage
Overall Participants	165	100%
Female participants	115	70%
Male participants	50	30%
Age range	5 - 53	
Overall average age	13	
Average female age	14	
Average male age	13	
Mexican native	79	48%
USA native	76	46%
Not specified native country	10	6%
Spanish language speaking	118	72%
English language speaking	31	19%
American sign language speaking	2	1%
Not specified language speaking	13	8%

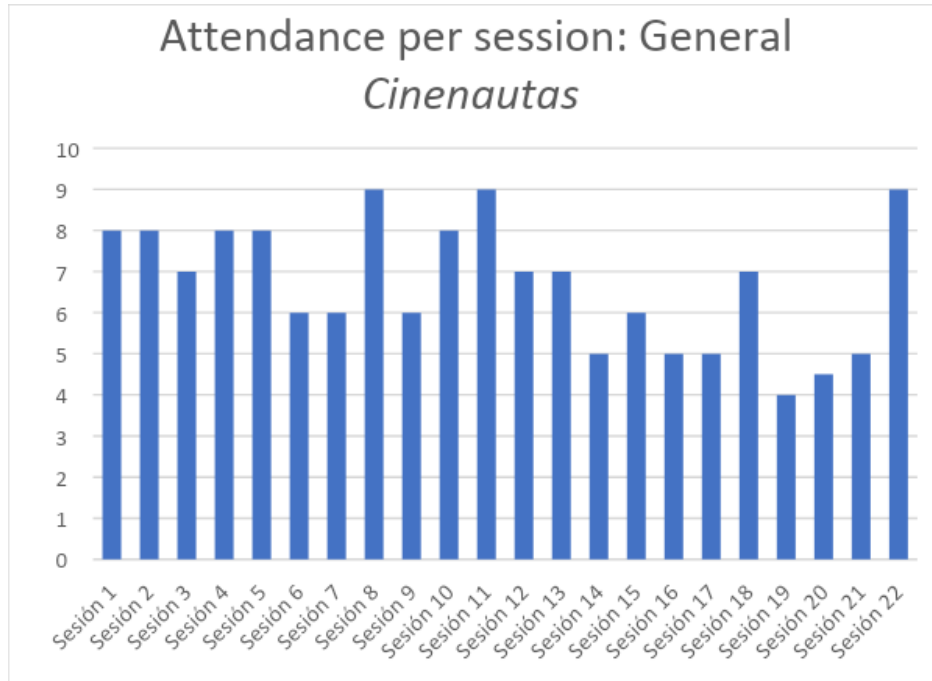
Border Youth Tennis Exchange  
 Summer 2021 Seasonal Report

Executive Summary

Course	Participants	Percentage female	Participant's average Age	Session's average attendance	Average Attendance (%)
Cinenautas (general)	11	54%	12	8	62%
Cinenautas (DIF)	18	61%	13	9	60%
Lego Motion	8	50%	9.2	6	76%
Lego STEAM (Boys and Girls Club)	23	65%	No Data	13	56%
Modern Dance (First half season)	17	82%	9	11	67%
Modern Dance (Second half season)	15	87%	8	12	82%
Modern Dance (CHMC)	12	100%	14	5.8	44%
Modern Dance (DIF)	41	56%	10	23	60%
Dance and Sports (CMyTN)	50	50%	11	9	32%
Digital Illustration	18	55%	12	12	68%
Intro to Drawing	22	60%	11	14	61%
Sketching for Comics	19	58%	12	12	65%
Homework Tutoring	5	60%	8.6	NA	82%
Arts Smarts	16	44%	12	.88	5%
Adult Build Your Own Business	26	100%	45	7	26%
Beginner Tennis 1A	16	50%	11	5	28%
Beginner Tennis 1B	13	69%	12	3	19%
Beginner Tennis Fall	25	68%	11	11	44%
Adult Beginner Tennis Fall	11	91%	37	3	21%
Adult Beginner Tennis	11	63%	33	3	24%
<b>Comprehensive Total</b>	<b>377</b>	<b>66%</b>	<b>15.3</b>	<b>9</b>	<b>49%</b>



<i>Cinenautas: Attendance and Demographics</i>		
	Cinenautas DIF Shelter	Cinenautas general
Enrolled participants	18	11
Total number of sessions	5	22
Percentage of girls	61%	54%
Percentage of boys	39%	46%
Average age	13	12
Average age of girls	14	12.8
Average age of boys	12	11
Average number of participants per session	9	8
Percentage of participants that attended 100% of the sessions	22%	9%
Percentage of participants that attended 50% or more of the sessions	56%	54%
Percentage of participants that attended 50% or less of the sessions	44%	46%
Percentage of girl participants that attended 50% or more of the sessions	36%	67%
Percentage of boy participants that attended 50% or more of the sessions	86%	60%
Total percentage of group attendance	60%	62%



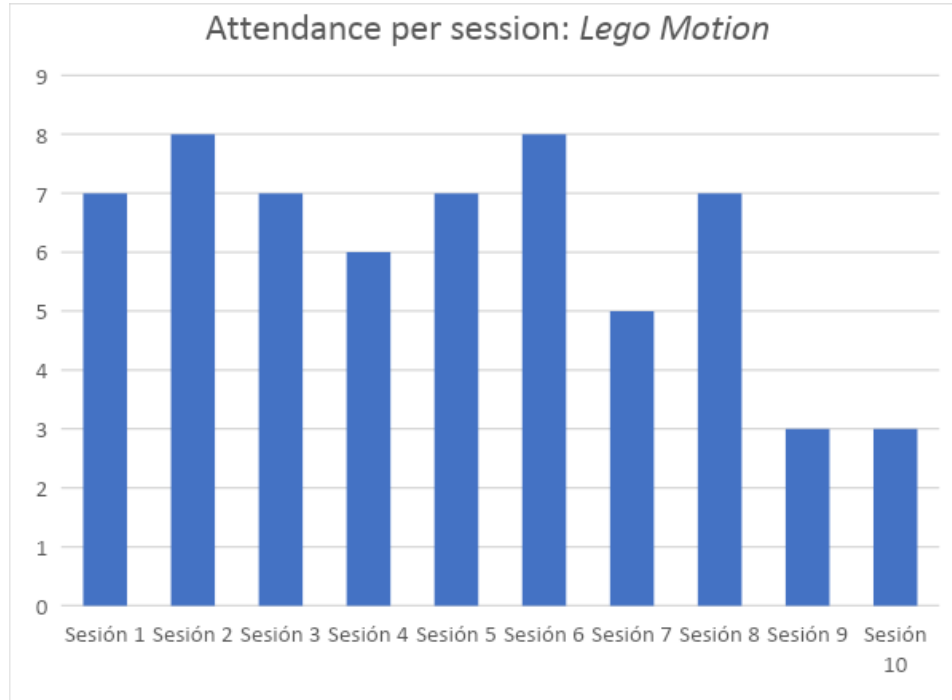
Observations:

- There was a strong decline in attendance for the General course during the last sessions.
- No severe technical difficulties were reported, minor issues were quickly resolved.
- In comparison with past reports, notable improvement was reported on behalf of DIF staff support.

Recommendations:

- The children were enthusiastic throughout the course even though attendance dropped towards the end. Most of the sessions took additional time because there were so many projects to present. A recommendation here would be to either extend sessions time or focus on time management to complete projects.
- This course could be more effective in the afternoon due to children having less energy than in the morning. The instructor reports that more concentration in the afternoon could be beneficial to audiovisual analysis and creativity.

Border Youth Tennis Exchange  
 Summer 2021 Seasonal Report



<i>Lego Motion: Attendance and Demographics</i>	
Enrolled participants	8
Total number of sessions	10
Percentage of girls	50%
Percentage of boys	50%
Average age	9.2
Average age of girls	9.2
Average age of boys	9.2
Average number of participants per session	6
Percentage of participants that attended 100% of the sessions	13%
Percentage of participants that attended 50% or more of the sessions	100%
Percentage of participants that attended 50% or less of the sessions	0%
Percentage of girl participants that attended 50% or more of the sessions	100%
Percentage of boy participants that attended 50% or more of the sessions	100%
Total percentage of group attendance	76%

Border Youth Tennis Exchange  
Summer 2021 Seasonal Report

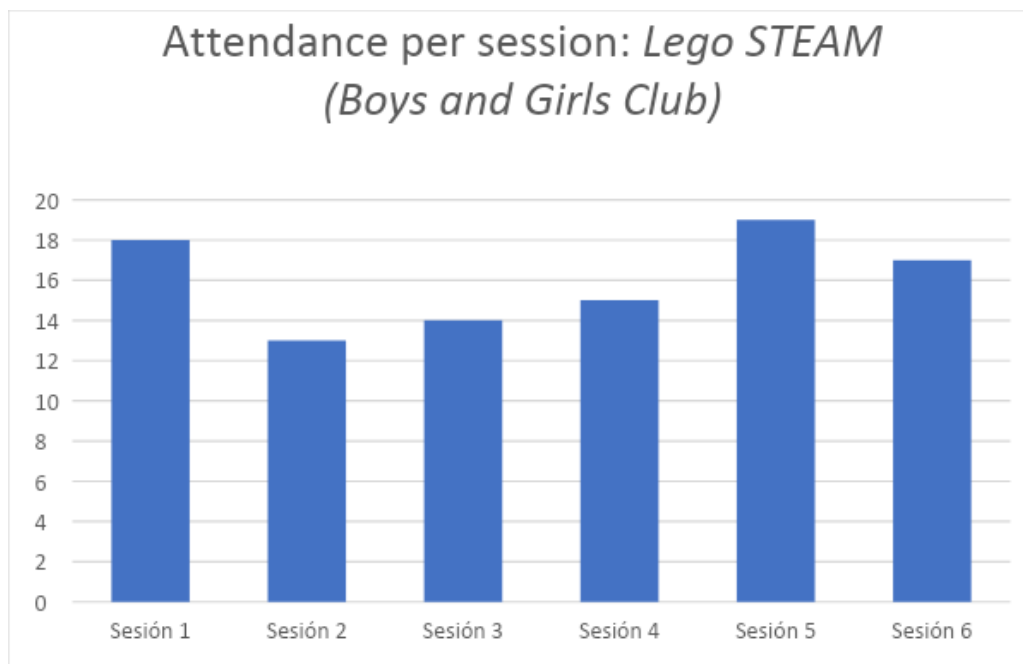
Observations:

- Attendance fell towards the end of the season. Lack of turning in final projects is the likely reason for less attendance.

Recommendations:

- Material (Legos) distribution was significantly delayed at the beginning of the season. Moving forward, materials should be solicited earlier, or communication should be improved to avoid situations such as this from happening.
- Only three final projects were submitted. Parents or guardians should be sent reminders periodically so that they can motivate their children to finish their final projects. A recommendation would be to have a parent/guardian reunion in the middle of the season to emphasize final project completion. Other BYTE programs are also having similar final project completion problems.
- Another recommendation would be to do a “homework log” where children can review tasks in accordance with their due date. This can serve as a tool to incentivize responsibility and discipline. This would also be useful to provide for parents/guardians so that they can track their child’s work.

<i>Lego STEAM</i> Boys and Girls Club: Attendance and Demographics	
Enrolled participants	23
Total number of sessions	6
Percentage of girls	65%
Percentage of boys	35%
Average age	NA
Average age of girls	NA
Average age of boys	NA
Average number of participants per session	13
Percentage of participants that attended 100% of the sessions	8%
Percentage of participants that attended 50% or more of the sessions	65%
Percentage of participants that attended 50% or less of the sessions	35%
Percentage of girl participants that attended 50% or more of the sessions	53%
Percentage of boy participants that attended 50% or more of the sessions	88%
Total percentage of group attendance	56%



Border Youth Tennis Exchange  
 Summer 2021 Seasonal Report

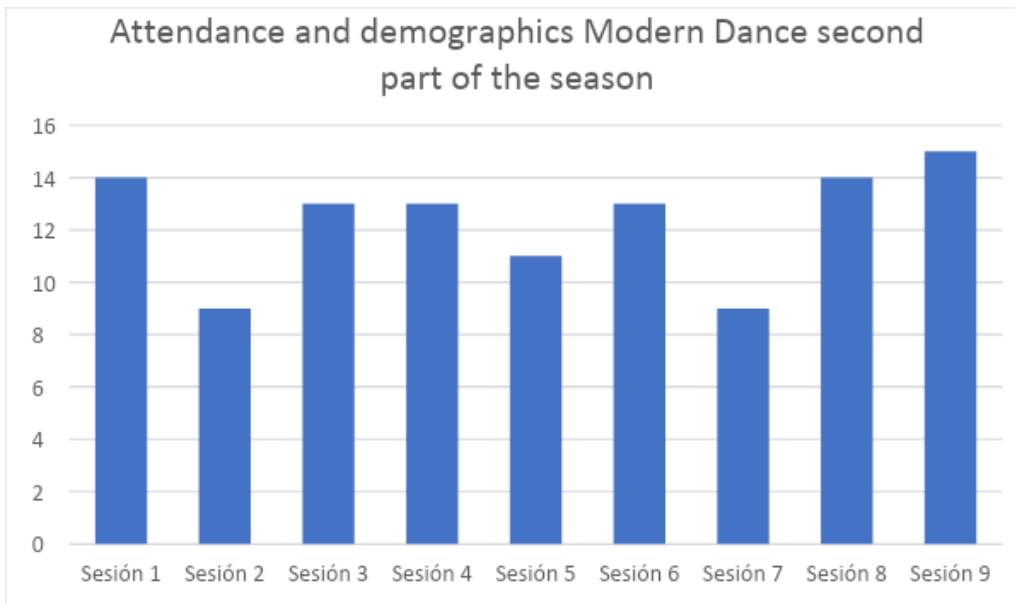
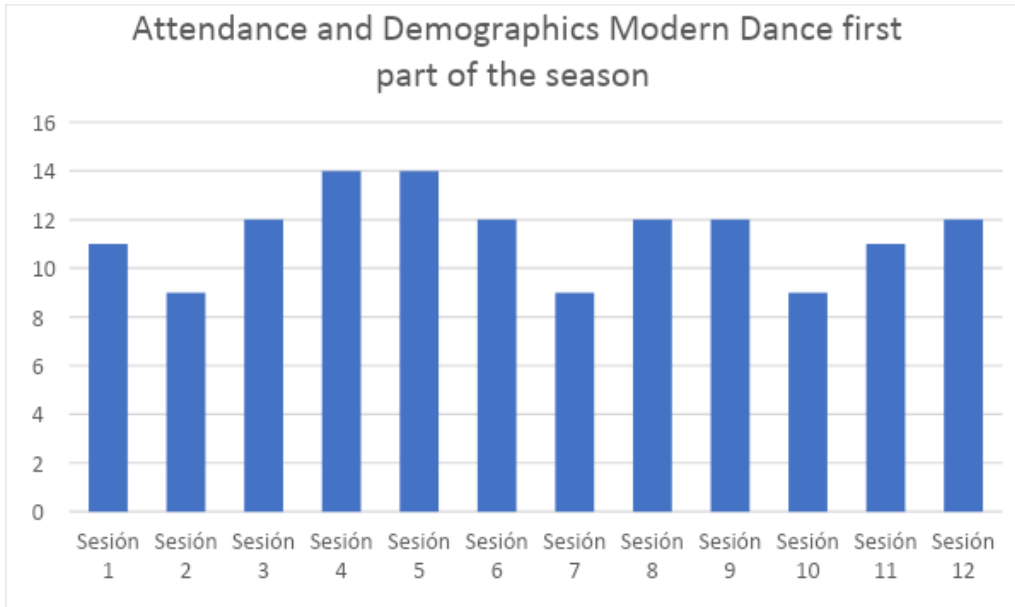
Observations:

- Attendance remained high throughout the course
- Staff from the Boys and Girls club was reported to be supportive throughout the course.

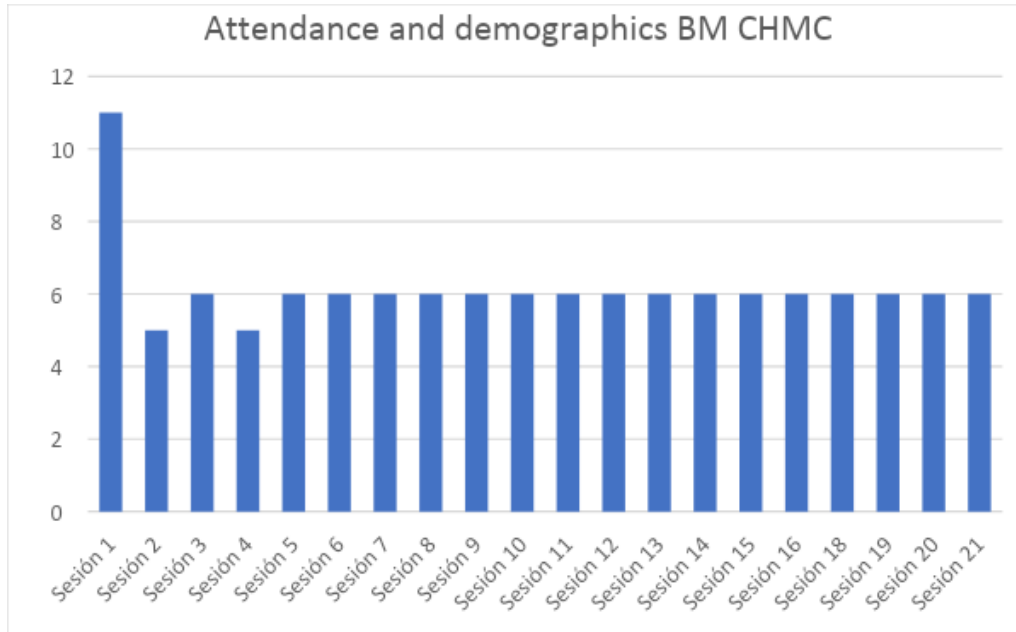
<i>Modern Dance Attendance and Demographics</i>			
	BM: Primera parte de temporada	BM: Segunda parte de temporada	BM: Casa Hogar Madre Conchita
Enrolled participants	17	15	12
Total number of sessions	12	9	20
Percentage of girls	82%	87%	100%
Percentage of boys	18%	13%	0%
Average age	9	8	14
Average age of girls	8	8	14
Average age of boys	7.5	7	No hay
Average number of participants per session	11	12	5.8
Percentage of participants that attended 100% of the sessions	18%	27%	0%
Percentage of participants that attended 50% or more of the sessions	71%	100%	92%
Percentage of participants that attended 50% or less of the sessions	29%	0%	8%
Percentage of girl participants that attended 50% or more of the sessions	71%	100%	92%
Percentage of boy participants that attended 50% or more of the sessions	100%	100%	NA
Total percentage of group attendance	67%	82%	44%



Border Youth Tennis Exchange  
Summer 2021 Seasonal Report



Border Youth Tennis Exchange  
Summer 2021 Seasonal Report



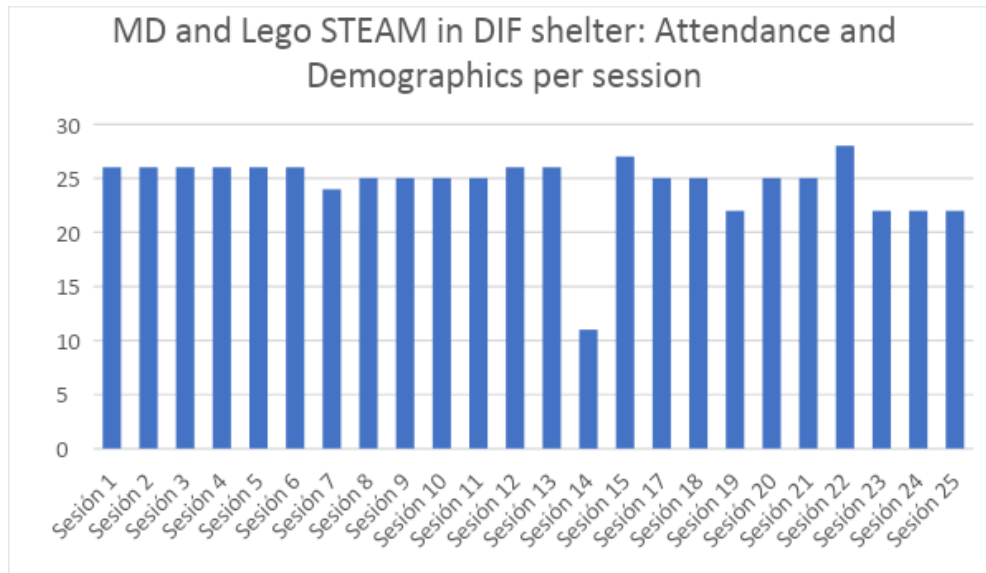
Observations:

- Participants reported excitement over the use of accessories and costumes for this course.
- Attendance never dropped lower than 50% in any course

Recommendations:

- Facemasks and the number of participants in a group made it difficult to hear instructions. It would be helpful to use a microphone (like the headsets singers use) or speakers for future sessions.
- Translation of directions was needed for participants in the US. Help from a translator would be useful in future sessions
- There was reported tardiness at CHMC. In the future it would be helpful to emphasize the importance of timeliness to parents/ guardians

Border Youth Tennis Exchange  
 Summer 2021 Seasonal Report



<i>Modern Dance and Lego STEAM in DIF Shelter Attendance and Demographics</i>	
Enrolled participants	41
Total number of sessions	24
Percentage of girls	56%
Percentage of boys	44%
Average age	10
Average age of girls	10
Average age of boys	10
Average number of participants per session	23
Percentage of participants that attended 100% of the sessions	15%
Percentage of participants that attended 50% or more of the sessions	63%
Percentage of participants that attended 50% or less of the sessions	37%
Percentage of girl participants that attended 50% or more of the sessions	65%
Percentage of boy participants that attended 50% or more of the sessions	50%
Total percentage of group attendance	60%

Observations:

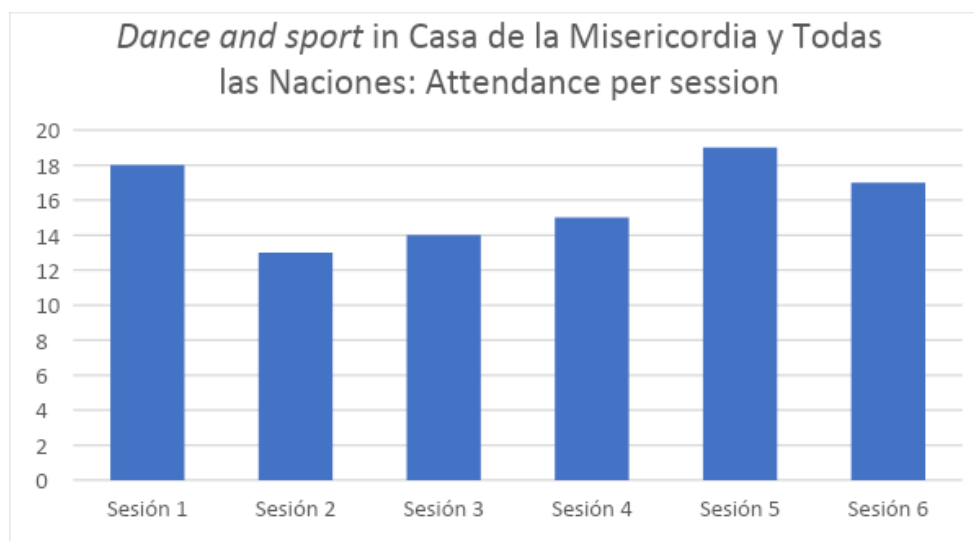
Border Youth Tennis Exchange  
Summer 2021 Seasonal Report

- Attendance remained constant due to the location being a shelter where participants remain under the care of staff.
- Some sessions reported that more time was needed to finish activities

<i>Dance and Sport</i> in Casa de la Misericordia y Todas las Naciones	
Enrolled participants	50

Border Youth Tennis Exchange  
 Summer 2021 Seasonal Report

Total number of sessions	6
Percentage of girls	50%
Percentage of boys	50%
Average age	11
Average age of girls	11
Average age of boys	11
Average number of participants per session	
Percentage of participants that attended 100% of the sessions	0
Percentage of participants that attended 50% or more of the sessions	26%
Percentage of participants that attended 50% or less of the sessions	74%
Percentage of girl participants that attended 50% or more of the sessions	20%
Percentage of boy participants that attended 50% or more of the sessions	36%
Total percentage of group attendance	32%



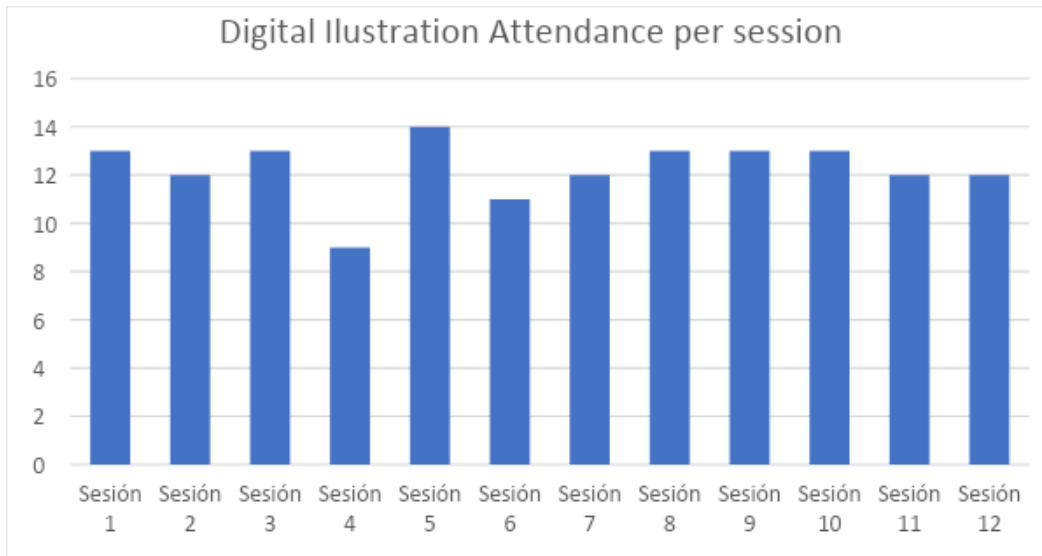
Observations:

- Due to COVID-19, the twelve sessions that were programmed at this site were interrupted. Only six remained.
- Course instructors reported a high degree of support from CMTN staff

<i>Digital Illustration Attendance and Demographics</i>	
Enrolled participants	18

Border Youth Tennis Exchange  
 Summer 2021 Seasonal Report

Total number of sessions	12
Percentage of girls	55%
Percentage of boys	45%
Average age	12
Average age of girls	13
Average age of boys	10
Average number of participants per session	12
Percentage of participants that attended 100% of the sessions	39
Percentage of participants that attended 50% or more of the sessions	72%
Percentage of participants that attended 50% or less of the sessions	28%
Percentage of girl participants that attended 50% or more of the sessions	90%
Percentage of boy participants that attended 50% or more of the sessions	50%
Total percentage of group attendance	68%



Observations:

- Unstable attendance was reported for the first half of this course

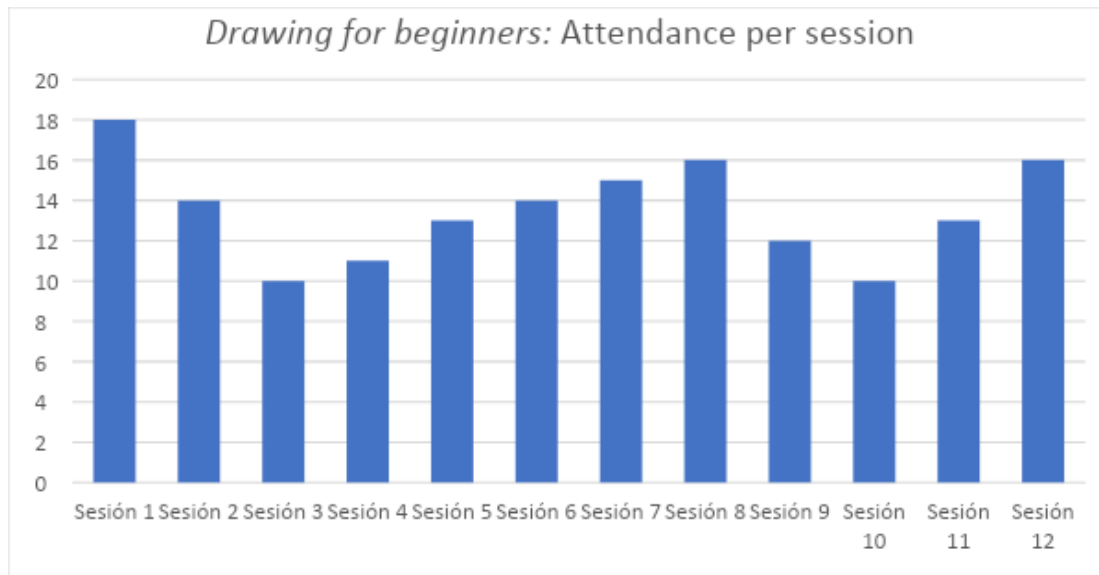
Recommendations:

- This course was well received according to its instructors; however, several participants did not turn in their final portfolio. Parents/guardians should be frequently reminded about their child’s final projects to make sure they get completed. These reminders could be done through email or through messages in group chats.
- Another recommendation would be to do a “homework log” where children can review tasks in accordance with their due date. This can serve as a tool to incentivize responsibility and discipline. This would also be useful to provide for parents/guardians so that they can track their child’s work.

<i>Drawing for Beginners: Attendance and Demographics</i>	
Enrolled participants	26

Border Youth Tennis Exchange  
 Summer 2021 Seasonal Report

Total number of sessions	6
Percentage of women	100%
Percentage of men	0%
Average age	45
Average age of women	45
Average age of men	N/A
Average number of participants per session	6.7
Percentage of participants that attended 100% of the sessions	3%
Percentage of participants that attended 50% or more of the sessions	19%
Percentage of participants that attended 50% or less of the sessions	97%
Percentage of women participants that attended 50% or more of the sessions	3%
Percentage of men participants that attended 50% or more of the sessions	N/A
Total percentage of group attendance	26%



Observations:

- Sessions 3 and 10 had the lowest attendance rates



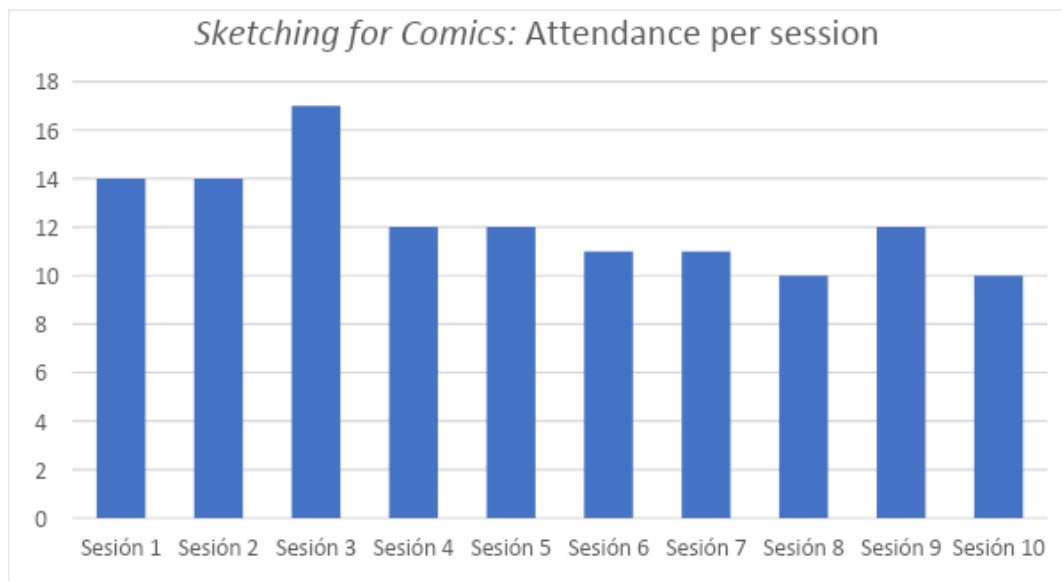
Recommendations:

- Twelve final reports were tuned in for this course. A recommendation for this course would be to send more reminders to parents/guardians about the due dates for final projects.
- Another recommendation would be to do a “homework log” where children can review tasks in accordance with their due date. This can serve as a tool to incentivize responsibility and discipline. This would also be useful to provide for parents/guardians so that they can track their child’s work.

<i>Sketching for Comics Attendance and Demographics</i>	
Enrolled participants	19

Border Youth Tennis Exchange  
 Summer 2021 Seasonal Report

Total number of sessions	10
Percentage of girls	58%
Percentage of boys	42%
Average age	12
Average age of girls	13
Average age of boys	10
Average number of participants per session	12
Percentage of participants that attended 100% of the sessions	26%
Percentage of participants that attended 50% or more of the sessions	63%
Percentage of participants that attended 50% or less of the sessions	37%
Percentage of girl participants that attended 50% or more of the sessions	64%
Percentage of boy participants that attended 50% or more of the sessions	75%
Total percentage of group attendance	65%



Observations:

Border Youth Tennis Exchange  
 Summer 2021 Seasonal Report

- Participants had the option of drawing their comic digitally or traditionally. Most of them chose to draw their comics traditionally.
- The return to in-person school affected attendance for this course. The impact is seen from session 4 onward.

Recommendations:

- Instructors reported the need to find more videos that will support participants in their comic drawing process.
- Participants had difficulties using digital platforms for this course. Instructors are considering switching to a purely traditional delivery of this course. Tutorials and instructions on how to use drawing applications would be needed to continue the hybrid of digital and traditional drawing. This process of tutorials could be time consuming, but it would be useful in future courses similar to comics.

Kino Border Initiative: Lego STEAM, Modern Dance and sports

- Attendance data for this site was not found on ASAP or Google Drive
- Instructors reported a lack of Legos
- Division of groups and activities could be coordinated better in the future
- Participation from mothers was also notable in this site

<i>Tutoring General Data</i>			
Number of tutorees	5		
Average age	8.6		
Number of sessions programmed	50		
Number of sessions completed	41		
Percentage of completed sessions	82%		
Frequency of subject requested for tutoring	Math	Spanish	Natural Sciences
	31	8	2

Observations:

- Math continues to be the most solicited subject

Border Youth Tennis Exchange  
Summer 2021 Seasonal Report

- One instructor reported waiting over half an hour for a tutoree to connect on two separate occasions

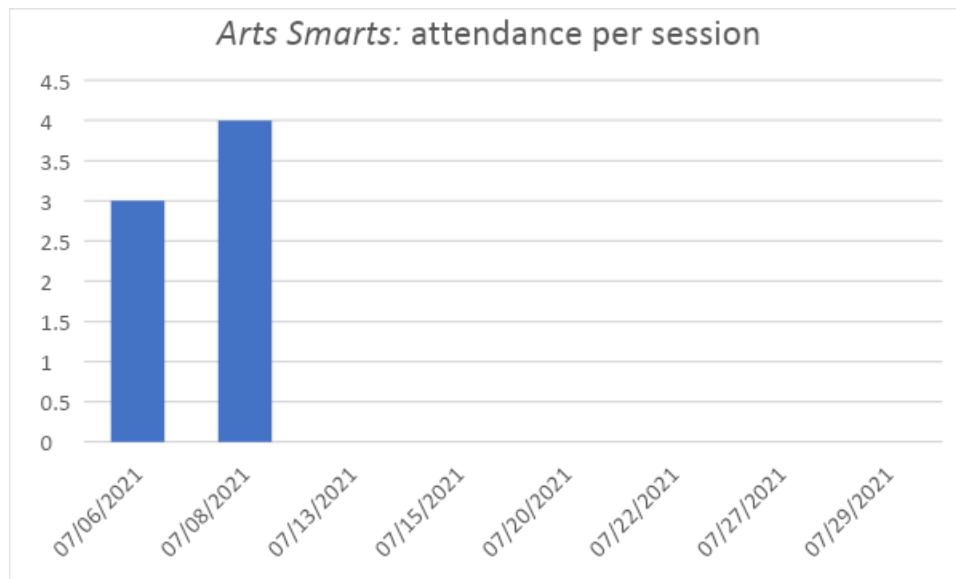
Recommendations:

- Most tutors deliver some form of math tutoring during their sessions. Only one tutor reported using a book in their instruction—the rest have been utilizing online resources in their sessions. Elementary level math books can be obtained from the Secretary of Public Education to serve as a guide for tutors. These books are free and many of BYTEs participants attend public schools already.
- Video tutorials on how to solve common math problems (fractions, geometry, arithmetic, etc.) can be created by tutors so they can serve as refreshers. They can be saved as a resource to BYTE and can also be distributed to parents/guardians.

**Sports and Anza's activities:**

Border Youth Tennis Exchange  
 Summer 2021 Seasonal Report

<i>Arts Smarts: Attendance and Demographics</i>	
Enrolled participants	16
Total number of sessions	8
Percentage of girls	44%
Percentage of boys	56%
Average age	12
Average age of girls	15
Average age of boys	10
Average number of participants per session	0.88
Percentage of participants that attended 100% of the sessions	0
Percentage of participants that attended 50% or more of the sessions	0
Percentage of participants that attended 50% or less of the sessions	16%
Percentage of girl participants that attended 50% or more of the sessions	0
Percentage of boy participants that attended 50% or more of the sessions	0
Total percentage of group attendance	5%



Observations:

- There were only two effective sessions in the course.

Recommendation:

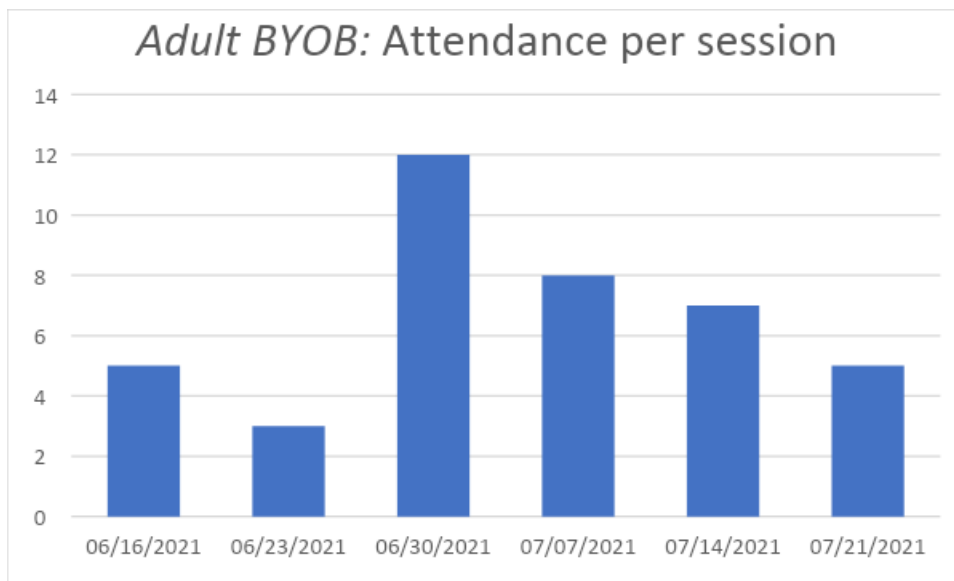
Border Youth Tennis Exchange  
Summer 2021 Seasonal Report

- Since there is no qualitative comments from the instructors in ASAP or Byte's drive, I cannot make any insightful comment on this data. I suggest including instructor's comments of each session somewhere in Byte's drive.

<i>Adult Build Your Own Business: Attendance and Demographics</i>	
Enrolled participants	26
Total number of sessions	6
Percentage of women	100%

Border Youth Tennis Exchange  
 Summer 2021 Seasonal Report

Percentage of men	0%
Average age	45 <sup>1</sup>
Average age of women	45
Average age of men	N/A
Average number of participants per session	6.7
Percentage of participants that attended 100% of the sessions	3%
Percentage of participants that attended 50% or more of the sessions	19%
Percentage of participants that attended 50% or less of the sessions	97%
Percentage of women participants that attended 50% or more of the sessions	3%
Percentage of men participants that attended 50% or more of the sessions	N/A
Total percentage of group attendance	26%



Observations:

- No session had at least 50% attendance rate.

<sup>1</sup> Only seven of the twenty-six participants were counted. The others didn't have their age registered.

Border Youth Tennis Exchange  
Summer 2021 Seasonal Report

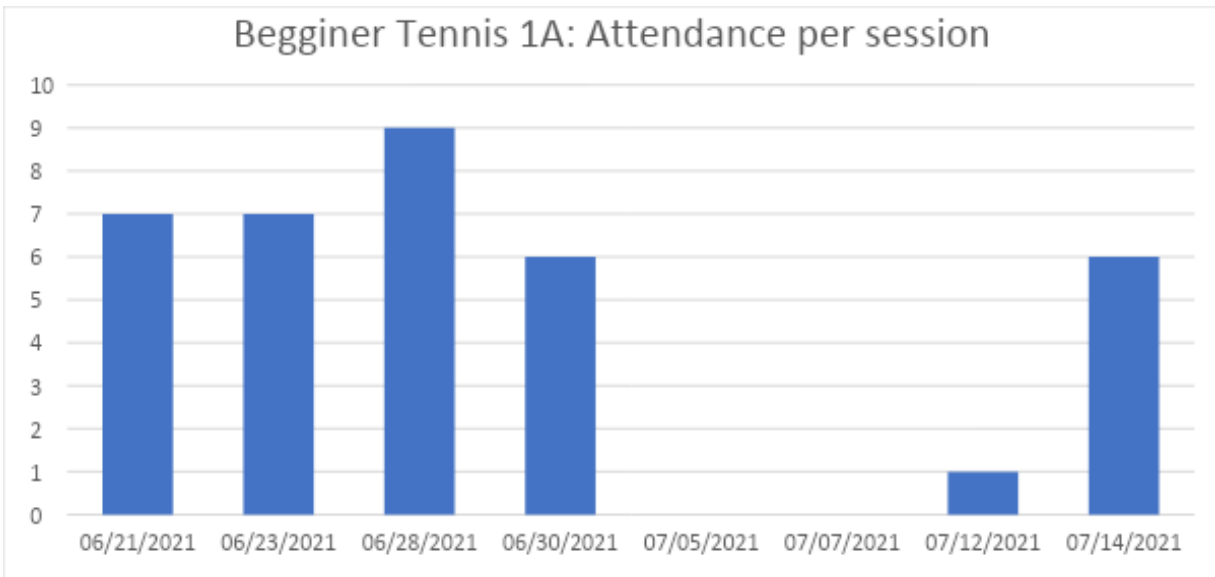
- Registered age data was very limited. The closest one was June 30<sup>th</sup> with 14/26 participants.

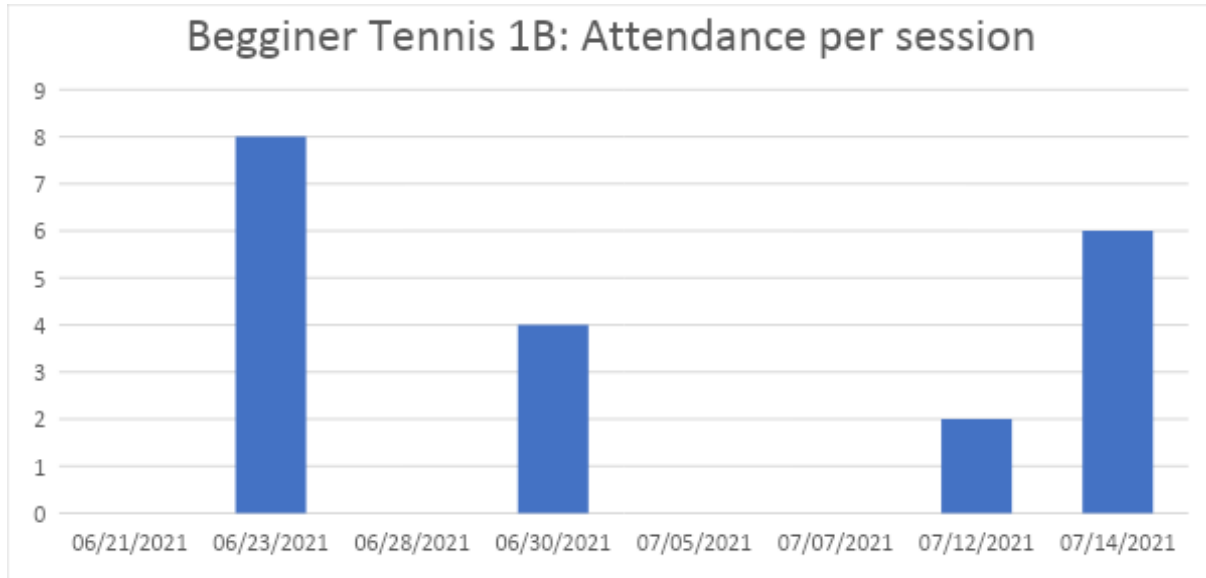
<i>Beginner Tennis: Attendance and Demographics</i>		
<i>Group:</i>	1A	1B



Border Youth Tennis Exchange  
 Summer 2021 Seasonal Report

Enrolled participants	16	13
Total number of sessions	8	8
Percentage of girls	50%	69%
Percentage of boys	50%	31%
Average age	11	12
Average age of girls	11	12
Average age of boys	10	11
Average number of participants per session	5	2.5
Percentage of participants that attended 100% of the sessions	0	0%
Percentage of participants that attended 50% or more of the sessions	31%	0%
Percentage of participants that attended 50% or less of the sessions	69%	100%
Percentage of women participants that attended 50% or more of the sessions	38%	0%
Percentage of men participants that attended 50% or more of the sessions	38%	0%
Total percentage of group attendance	28%	19%



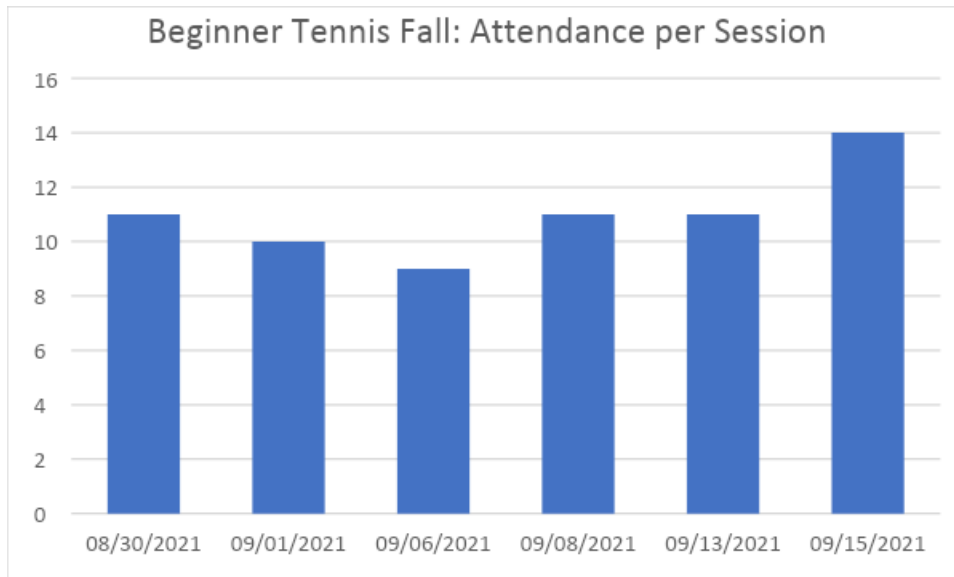


Observations:

- In Beginner Tennis 1B no participant attended more than 50% scheduled sessions.

Border Youth Tennis Exchange  
 Summer 2021 Seasonal Report

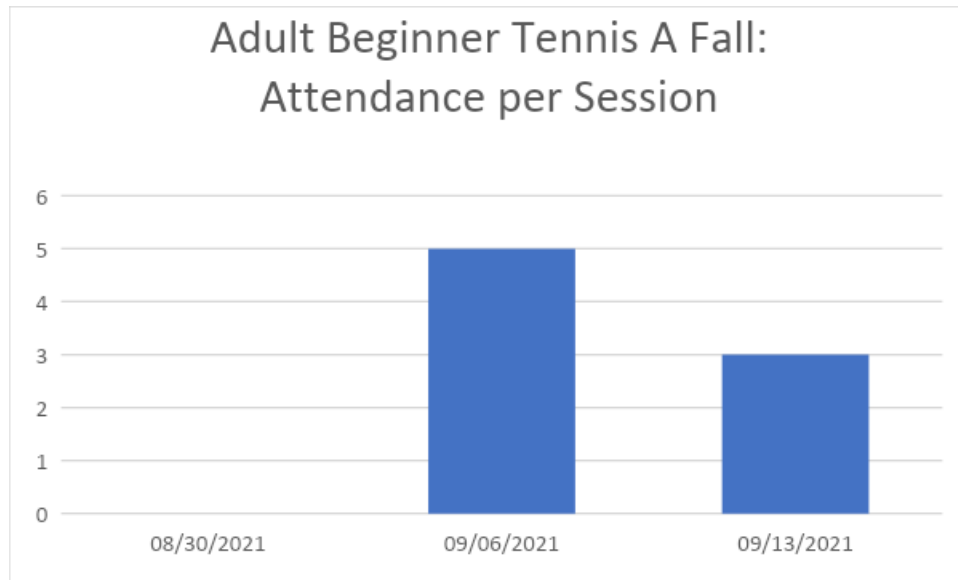
Enrolled participants	25
Total number of sessions	6
Percentage of girls	68%
Percentage of boys	32%
Average age	11
Average age of girls	10
Average age of boys	11
Average number of participants per session	11
Percentage of participants that attended 100% of the sessions	12%
Percentage of participants that attended 50% or more of the sessions	44%
Percentage of participants that attended 50% or less of the sessions	55%
Percentage of women participants that attended 50% or more of the sessions	53%
Percentage of men participants that attended 50% or more of the sessions	38%
Total percentage of group attendance	44%



*Adult Beginner Tennis: Attendance and Demographics*

Border Youth Tennis Exchange  
 Summer 2021 Seasonal Report

Group:	Adults Fall	Adults
Enrolled participants	11	11
Total number of sessions	3	3
Percentage of women	91%	63%
Percentage of men	9%	37%
Average age	37	33
Average age of women	38	33
Average age of men	31	37
Average number of participants per session	3	3
Percentage of participants that attended 100% of the sessions	0%	0%
Percentage of participants that attended 50% or more of the sessions	27%	27
Percentage of participants that attended 50% or less of the sessions	73%	73%
Percentage of women participants that attended 50% or more of the sessions	3%	29%
Percentage of men participants that attended 50% or more of the sessions	0%	25%
Total percentage of group attendance	21%	24%



Border Youth Tennis Exchange  
Summer 2021 Seasonal Report

